

Model 450 Series II

ARTICULATING BOOM LIFT

Features

Articulating Jib
(450AJ only) 4 ft 1 in. (1.24 m)

Platform
Side Entry 30 x 72 in. (0.76 x 1.83 m)

Inward Self-Closing Swinging Gate

180 Degree Hydraulic Platform Rotator

Platform Console Machine Status Light Panel*

110V-AC Receptacle in the Platform

5 Degree Tilt Alarm/Indicator Light

Rim Protector Lug Tread Tires

Swing Out Engine Module

Gull-wing Turntable Hoods

12V-DC Auxiliary Power

Hourmeter

Hydrostatic Drive

Proportional Controls

Control ADE® System

Lifting/Tie Down Lugs

Horn

Oscillating Axle

Aluminum Cast Control Box

Operator Tool Tray

Motion Alarm

Accessories & Options

30 x 60 in. (0.76 x 1.52 m) Platform

Mesh to Top Rail — Bolt-on Aluminum

1/2 in. Air Line to Platform

Soft Touch System

Foam-Filled Tires

Non-Marking Tires

Exhaust Purifier Muffler (Deutz)

2500W Generator

Flashing Amber Beacon

43.5 lb (19.73 kg) Propane Tank

Cold Weather Kit¹

Hostile Environment Kit²

Arctic Package³

Semi-Trak

Light Package

Fall Arrest Platform

Platform Worklights

Accessories

SkyPower® Package — Includes 7500W generator, power cable to platform, and 1/2 in. air line to platform.

SkyWelder® Package — Includes SkyPower® Package, 250-Amp Miller® welder in the platform, leads, clamp and stinger.

SkyCutter® Package — Includes SkyPower® and Miller Plasma Cutter mounted in platform.

1. Includes battery blanket, hydraulic tank heater, block heater (Ford and CAT), glow plugs (Deutz and CAT)

2. Includes boom wipers, cylinder bellows and console cover.

3. Includes arctic hydraulic hoses (drive and steer only) and main boom cable, arctic hydraulic oil, extreme cold engine oil, anti-freeze (CAT only), fuel conditioner, engine block heater, battery blanket, glow plugs, hydraulic tank heater, and oversized footswitch.

Note: Some options may increase lead time, and some option combinations may not be available.



Increased Productivity

- Larger work envelope on jib and non-jib models
- Standard articulating jib on the 450AJ increases access in confined spaces
- Improved rough terrain capabilities with 45% gradeability
- Industry leading duty cycles

Enhanced Control

- Exclusive Control ADE® (Advanced Design Electronics) system for better performance with improved serviceability
- Common control system to other JLG combustion-powered boom lifts for reduced training
- Provides better fuel efficiency to lower costs and increase uptime

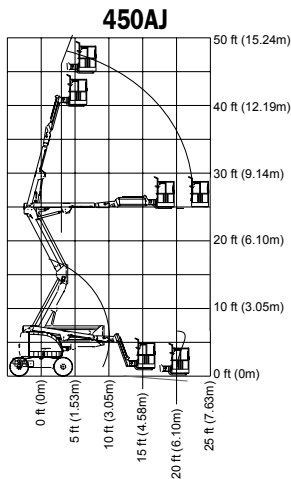
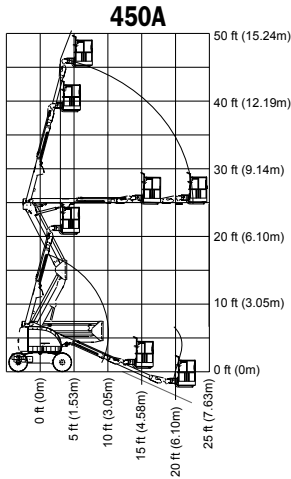
Improved Maintainability

- Enhanced electrical and hydraulic systems minimize wiring and hoses, reducing wear and maintenance
- Control ADE system minimizes the number of wires and connections

Model 450 Series II

ARTICULATING BOOM LIFT

Specifications



Reach

Platform Height	45 ft (13.72 m)
Horizontal Outreach	24 ft 6 in. (7.47 m)
Up and Over Height	25 ft 2 in. (7.67 m)
Swing	360 Degrees Non-Continuous
Platform Capacity	
Unrestricted	500 lb (227 kg)
Platform Rotator	180 Degrees Hydraulic
Jib (Range of Articulation)	
450AJ Only	4 ft 1 in. (1.24 m)
	145 Degrees (+78, -67)

Dimensions

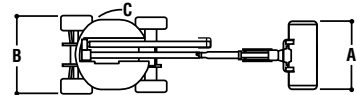
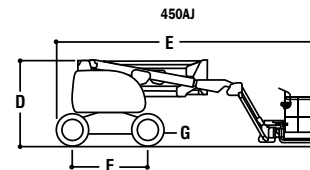
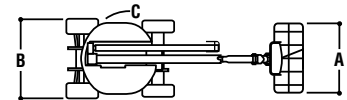
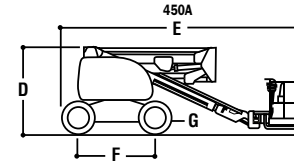
A. Platform Size	30 x 72 in. (0.76 x 1.83 m)
B. Overall Width 2WD	6 ft 6 in. (1.98 m)
Overall Width 4WD	6 ft 10 in. (2.08 m)
C. Tailswing (working condition)	Zero
D. Stowed Height	7 ft 5 in. (2.26 m)
E. Stowed Length	21 ft 5 in. (6.53 m)
F. Wheelbase	6 ft 6 in. (1.98 m)
G. Ground Clearance	14 in. (36 cm)
Gross Vehicle Weight	
450A	14,500 lb (6,577 kg)
450AJ	16,500 lb (7,484 kg)
Max. Ground Bearing Pressure 2WD	
450A	58 psi (4.06 kg/cm ²)
450AJ	78 psi (5.48 kg/cm ²)
Max. Ground Bearing Pressure 4WD	
450A	35 psi (2.46 kg/cm ²)
450AJ	36 psi (2.53 kg/cm ²)

Chassis

Drive Speed 2WD	3.5 mph (5.6 kmph)
Drive Speed 4WD	4.5 mph (7.2 kmph)
Gradeability 2WD	30%
Gradeability 4WD	45%
Tires 2WD	12 x 16.5 Lug Tread
Tires 4WD	33/1550 x 16.5 Superwide
Axle Oscillation	8 in. (20.3 cm)
Turning Radius (Inside/Outside)	5 ft 8 in./14 ft (1.73 m/4.27 m)

Power Source

Dual Fuel Engine	
GM Vortec 3000 MPFI	82 hp (61 kW)
Diesel Engine	
Deutz F3M1011	47 hp (35 kW)
Diesel Engine	
Caterpillar 3024C	50 hp (37.2 kW)
Fuel Tank Capacity	16.5 gal. (62.5 L)
Hydraulic Reservoir	30 gal. (113.6 L)
Auxiliary Power	12V DC



The JLG "2 & 5" Warranty for Models 450A & 450AJ

JLG Industries, Inc. backs our 450 Series II boom lifts with our exclusive "2 & 5" Warranty. We provide coverage for two (2) full years, and cover all specified major structural components for five (5) years. These machines meet or exceed applicable OSHA Regulations in 29 CFR 1910.67, 29 CFR 1926.453, ANSI A92.5-1992 and CSA standard CAN3-B354.4-M82 as originally manufactured for intended applications. We reserve the right to make price, specification, and/or equipment changes without prior notification. All prices are in U.S. dollars, ex-works McConnellsburg, PA.



JLG Industries, Inc.

1 JLG Drive
 McConnellsburg, PA 17233-9533
 Telephone 717-485-5161
 Toll-free in US 877-JLG-LIFT
 Fax 717-485-6417
www.jlg.com