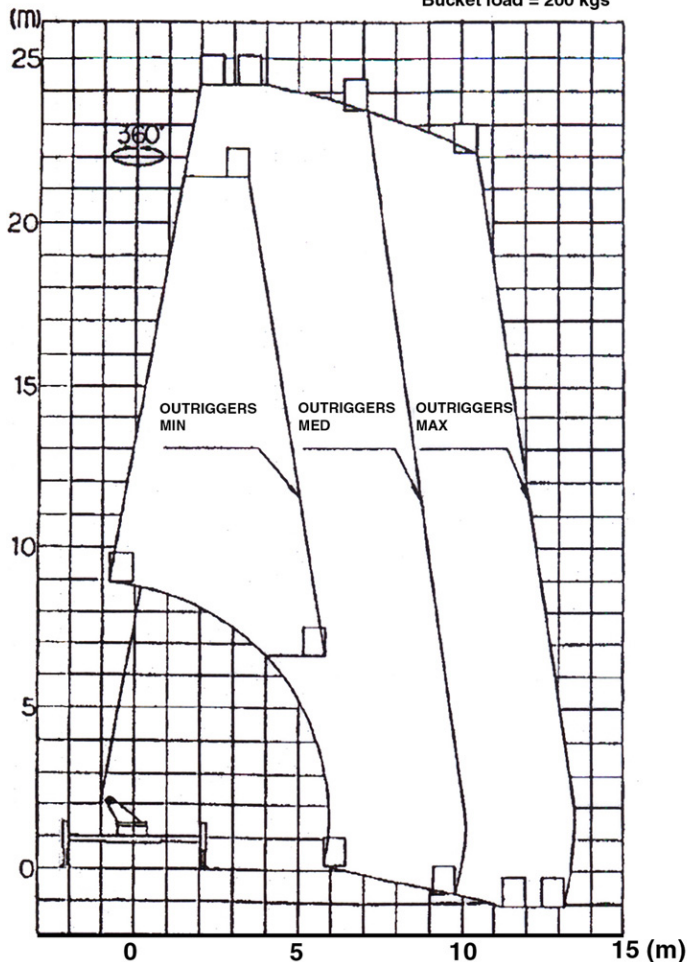


AICHI SK240 - WORKING DIAGRAM

Bucket load = 200 kgs



Note: 1: The Maximum working range with fully retracted outriggers can be attained when the bucket is within 50 degrees of front and rear.

- 2: The working range is calculated assuming that the equipment is installed on level solid ground and wind velocity is below 16 m/s.
- 3: The deflection of booms is not considered on the working range shown in the diagram.
- 4: Outrigger width = Min. 1.980 to 3.090 mtrs
Mid. 3.090 to 4.150 mtrs
Max. 4.150 to 4.200 mtrs

